

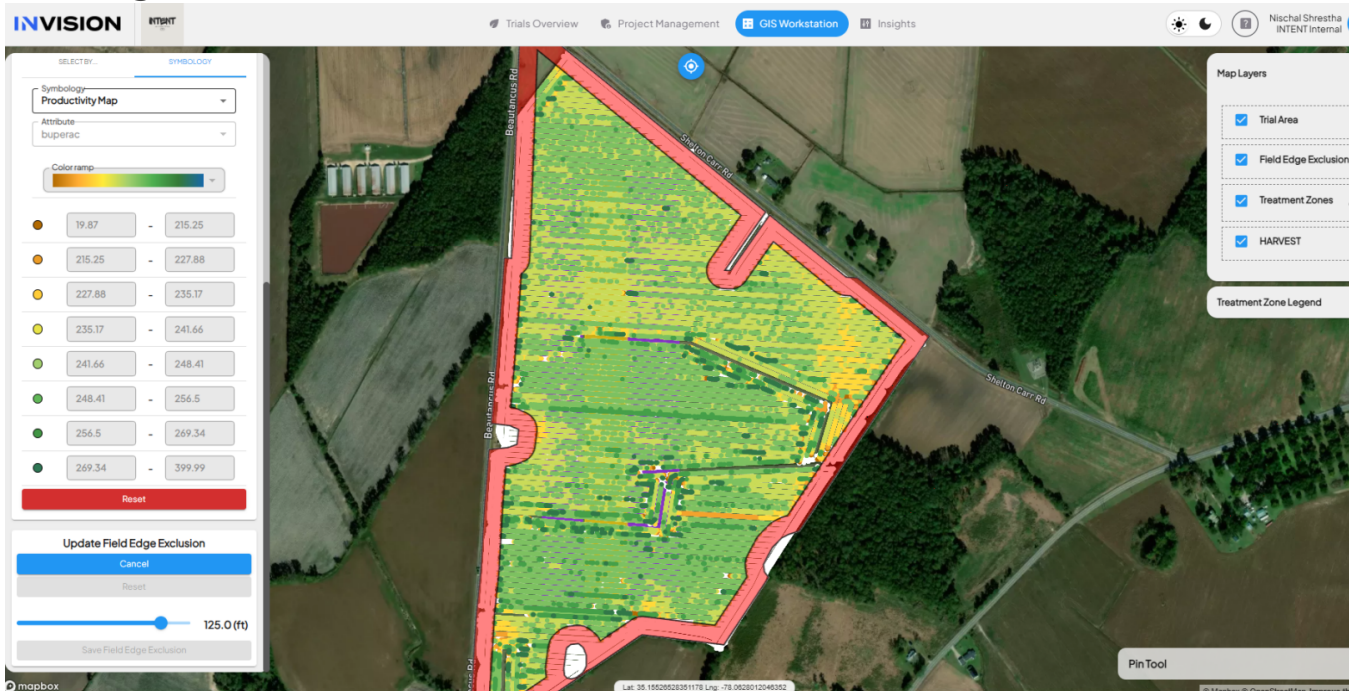
November 2024 Release

v3.5.0

We're excited to announce the launch of **INVISION v3.5.0**! This release introduces the **Field Edge Exclusion Tool** along with several improvements to usability and performance.

New Features

- **Field Edge Exclusion Tool**



- Designed to remove **head rows** and **end rows** from harvest data, preventing poor-yielding edges from skewing aggregate statistics.
- Previously automated, but now users can **manually adjust buffer distances** in GIS Workstation using a **slider tool** for precise modifications.

- **Treatment Comparison Chart**



- o A new chart in the **Insights panel** displaying **actual yield values** (e.g., bu/ac, lbs/ac, tn/hectare).
- o Similar to **Yield Comparison (%)**, this new chart helps users quickly visualize and compare treatment outcomes.

Enhancements

- **INVISION Mobile App Improvements**

- Restructured backend API calls for **faster field & visit loading**, improving navigation efficiency.
 - Fixed an issue where field visits were incorrectly marked as **complete when no questions were answered**, adding safeguards to prevent errors.
 - **Soil Service Optimization**
 - Refactored soil-service for **faster retrieval of soil data layers (SSURGO, CANSIS)**.
 - Optimized Common Land Units retrieval, improving **aggregate soil insights** and reducing database redundancy.
 - **Protocol Export Enhancements**
 - **Updated export emails** with detailed metadata, improving **export identification** and clarity for users.
 - Implemented **backend quantile classification** of yield data, shifting calculations from frontend to backend for faster **Productivity Map** loads in **View Fields & GIS Workstation**.
-

Bug Fixes

- Fixed an issue where **Field Notes images** appeared rotated correctly on desktop but were misaligned in PDF reports.
 - Resolved a bug where **harvest dates** entered in the **General section** were not appearing in **harvest PDF reports**.
-

Closing the Year Strong!

It's been a fantastic year for INVISION, and none of this would be possible without your support, feedback, and dedication. Thank you for making it all happen!

Wishing you a joyful holiday season!

Revision #1

Created 28 February 2025 16:23:46 by Nischal Shrestha

Updated 22 August 2025 16:46:00 by Nischal Shrestha