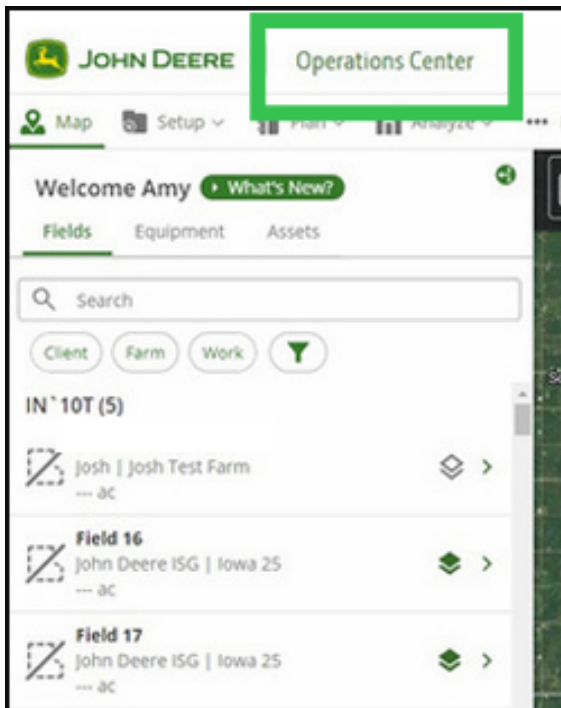


Exporting Digital Data from JohnDeere

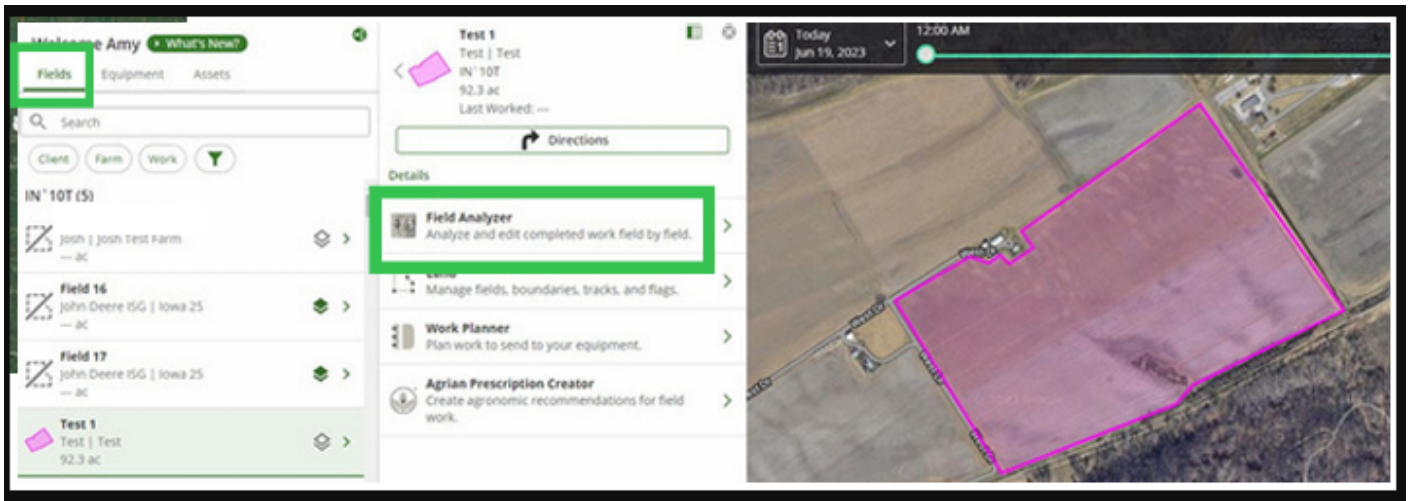
Exporting Digital Data from JohnDeere

Log In and Select Your Field

- Sign in to www.myjohndeere.com and select **Operations Center**

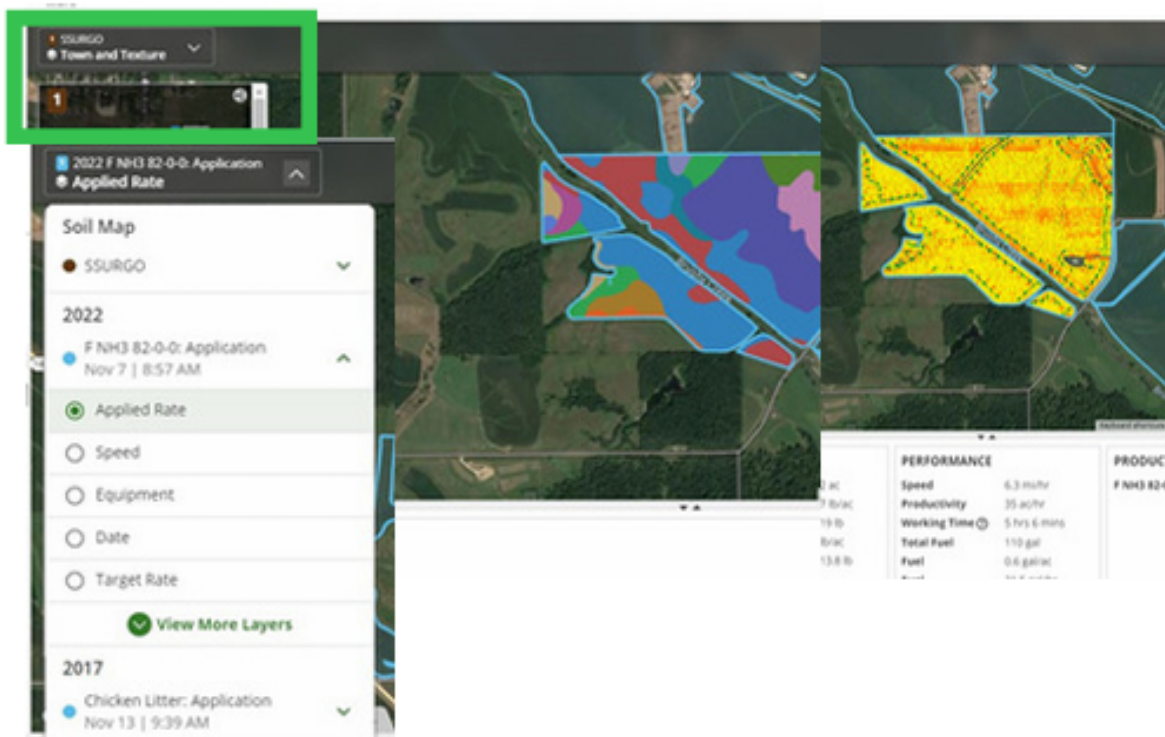


- Select **Fields**, and then select the specific field you want to view. Then, select **Field Analyzer**



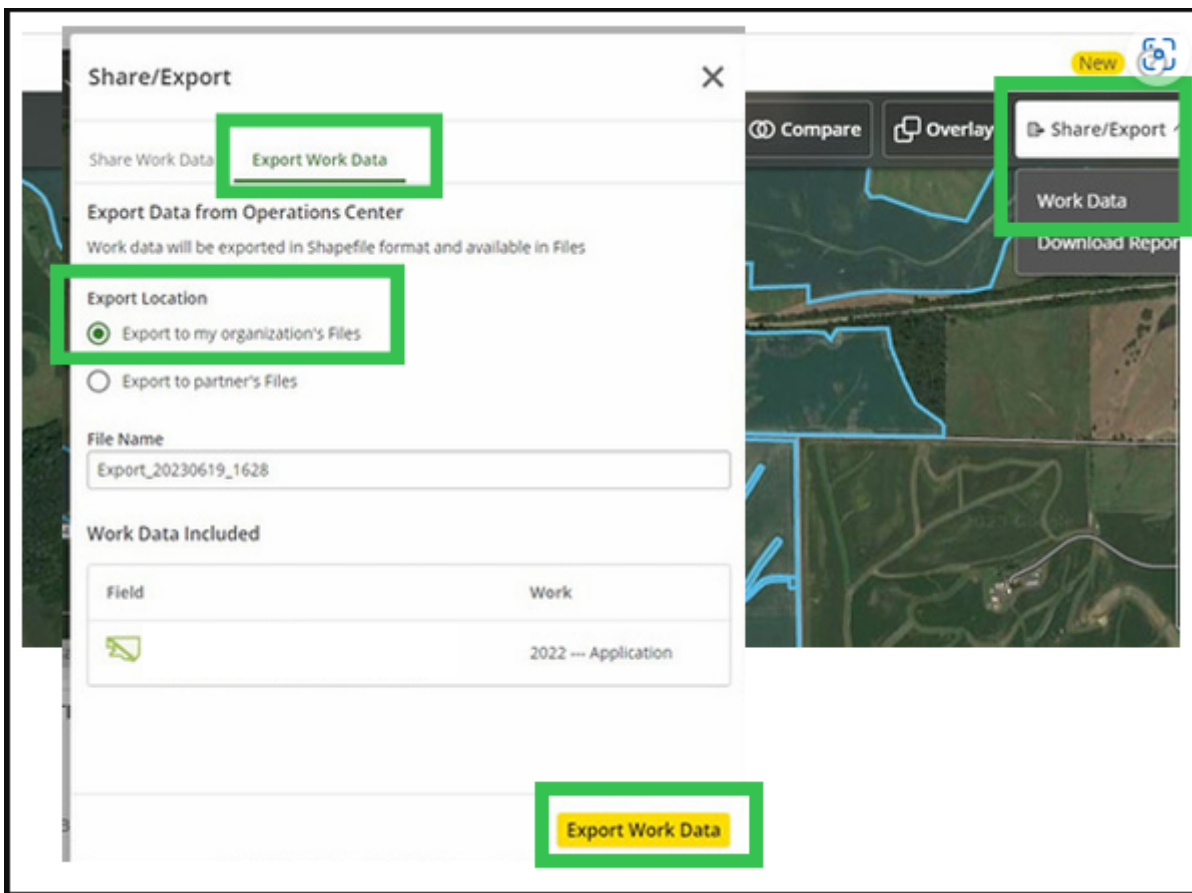
Selecting Data Layers to Export

- Select the layers or data you want to show on the map. You can select Planting, Harvest, or Application layers to export. Be sure to select variety for Planting, Yield for Harvest, and Applied Rate for the Application layer



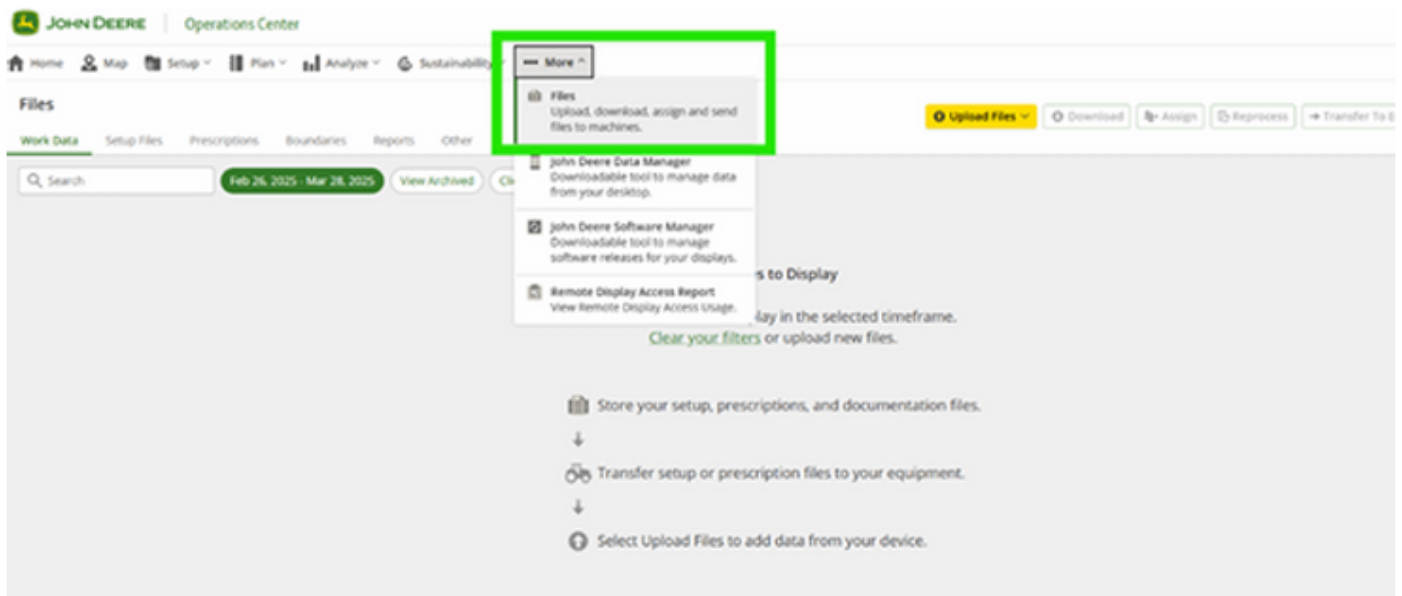
Share/Export Data

- Once you have your layers selected, click **Share/Export** at the top right of the screen
- Select the **Export Work Data** tab and check the **Export to my organization's Files** radio button
- Name the file something you will recognize, and then select **Export Work Data** in the bottom right



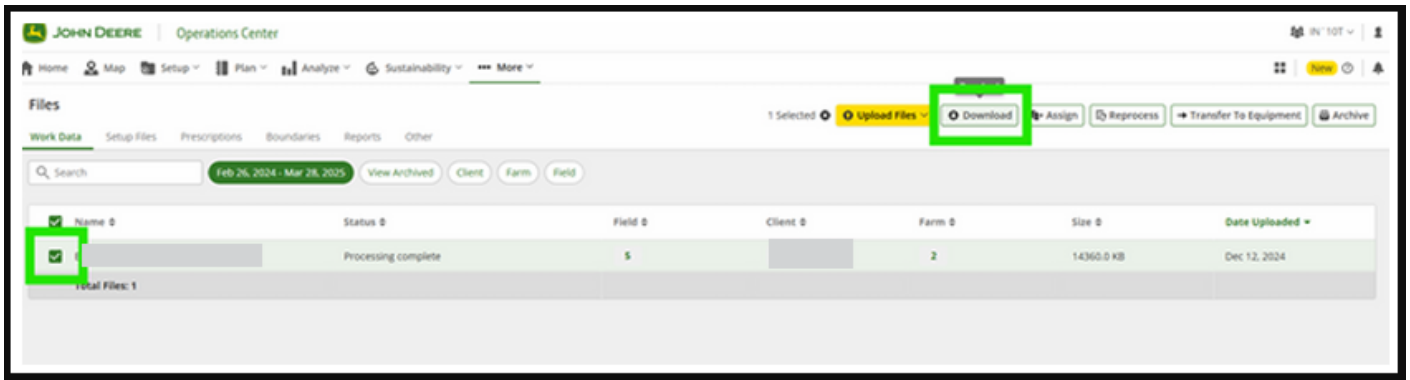
Navigate to the Files Page

- Select the **More** dropdown and click **Files**

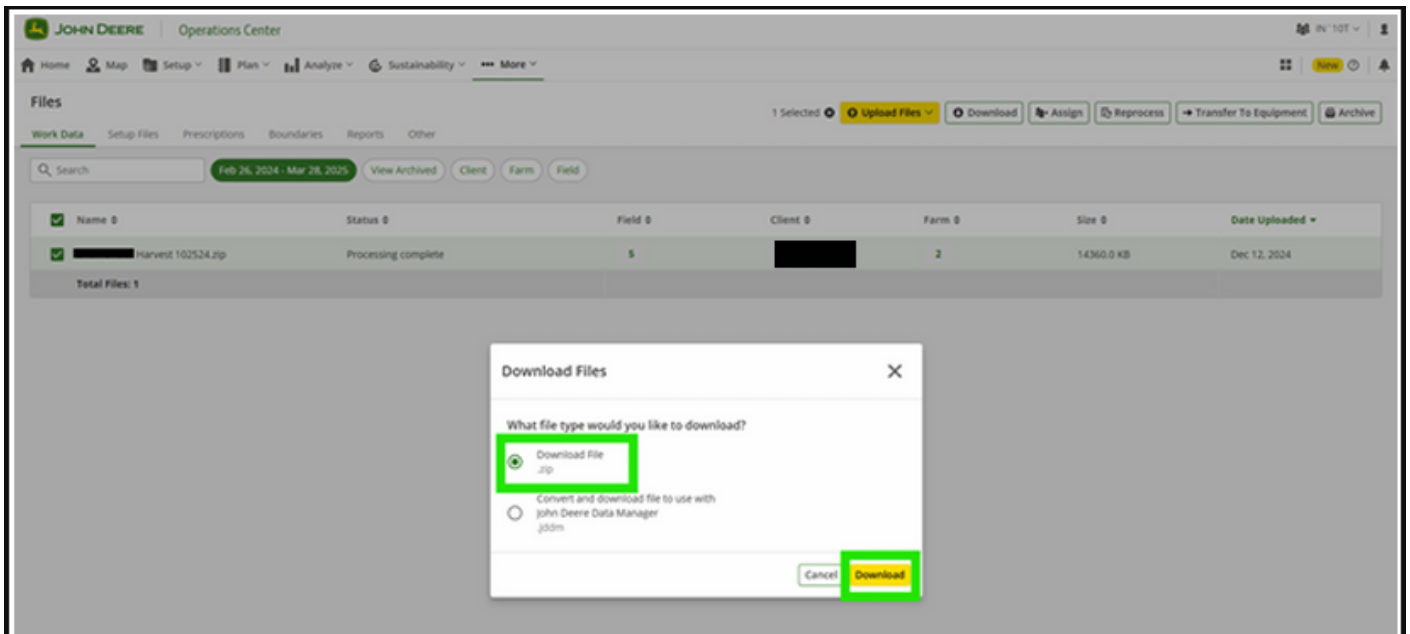


Export the Files to your Computer

- Locate the file you exported from the **Files** page in the **Work Data** tab
- Check the box next to the file you wish to download and select the **Download** button



- Select **Download File .zip** and then **Download**



- You can now upload the file to INVISION!

Revision #5

Created 5 May 2025 14:47:13 by Jake Hudzinski

Updated 5 May 2025 16:33:14 by Jake Hudzinski